

**What's Right For Kids
Tracking and Attacking California's
Achievement and Opportunity Gaps**

Wednesday, April 28, 2010

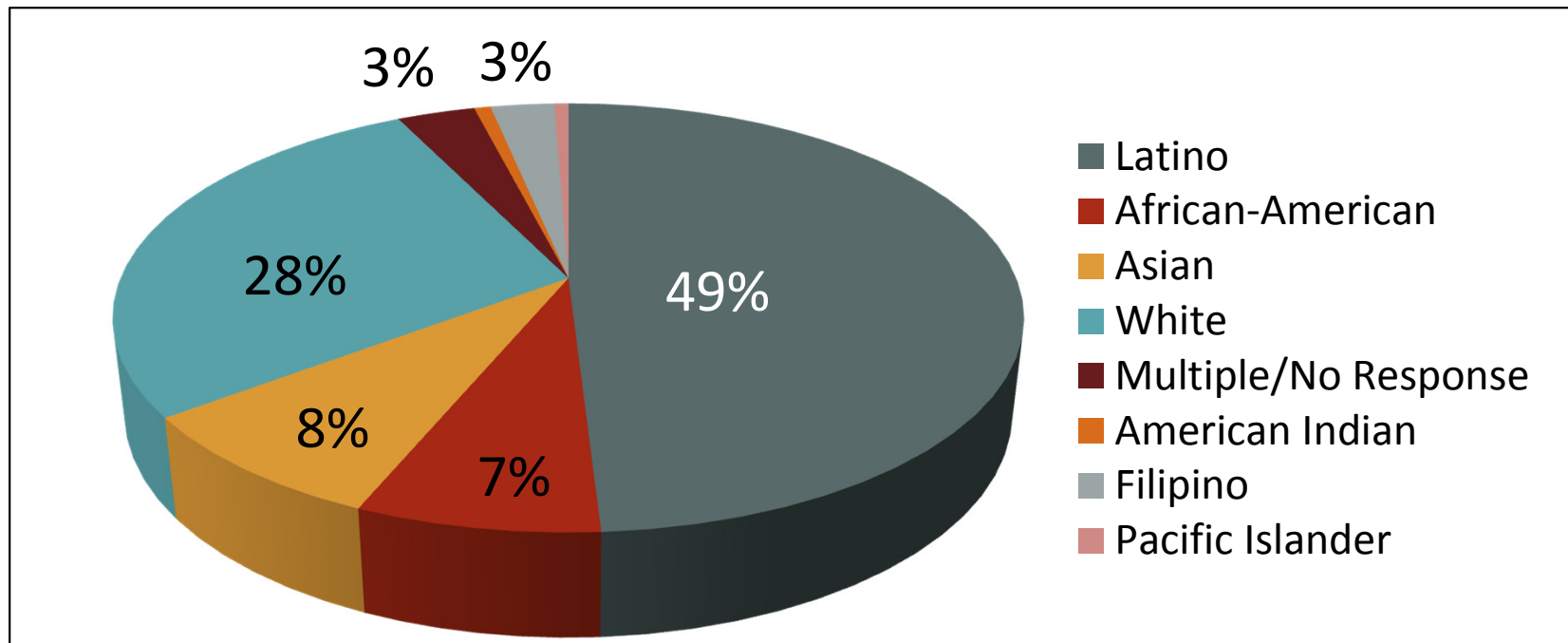
**Presented by: Dr. Arun Ramanathan
Education Trust-West**



The Education Trust

©2010 THE EDUCATION TRUST – WEST

K-12 Enrollment in California 2008-09



- 6.25 million students served
- 54% Economically Disadvantaged
- 24% English Learners



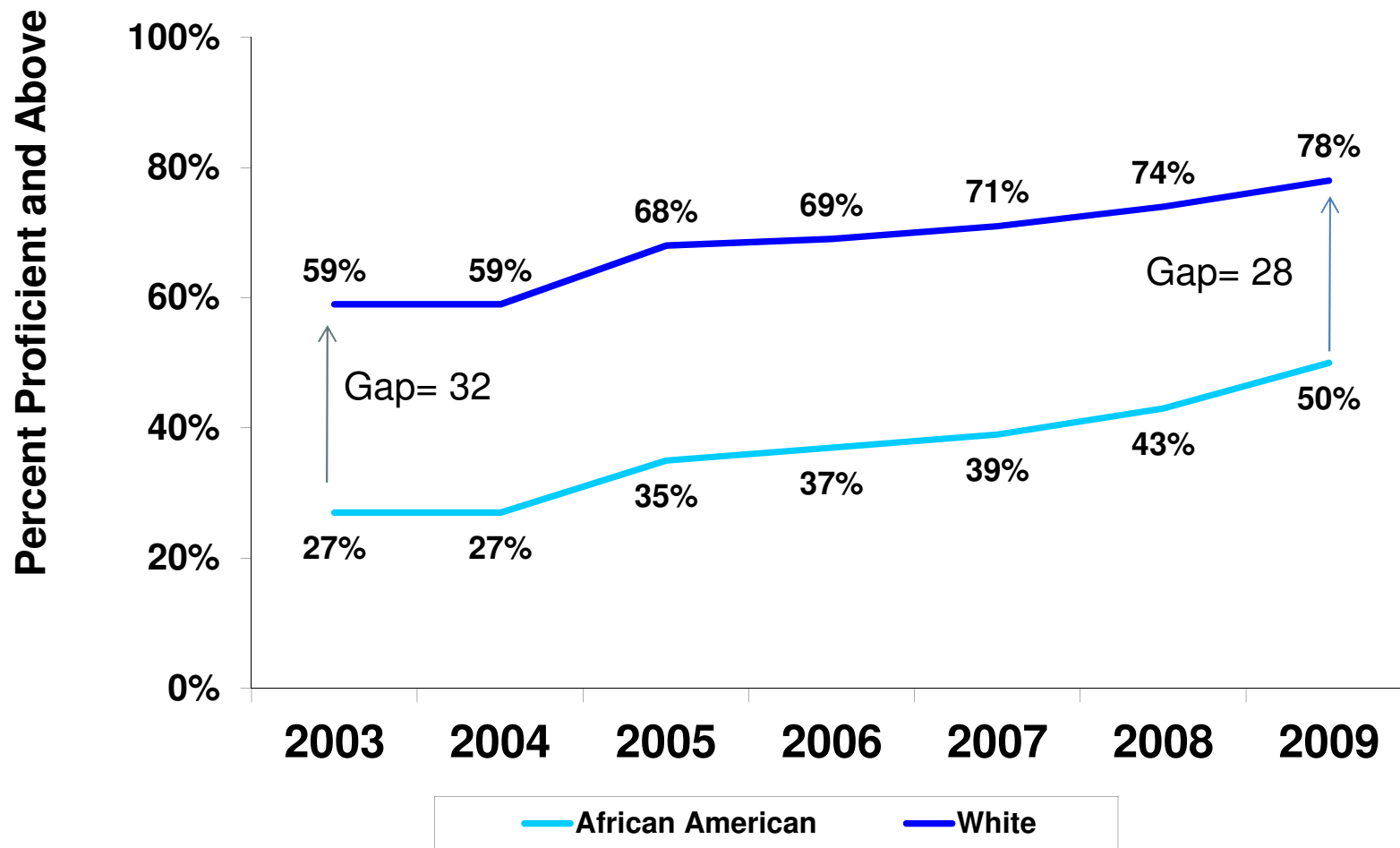
ACHIEVEMENT DATA

What do we know about the overall performance of students in California?

What do we know about the achievement of different subgroups in California?

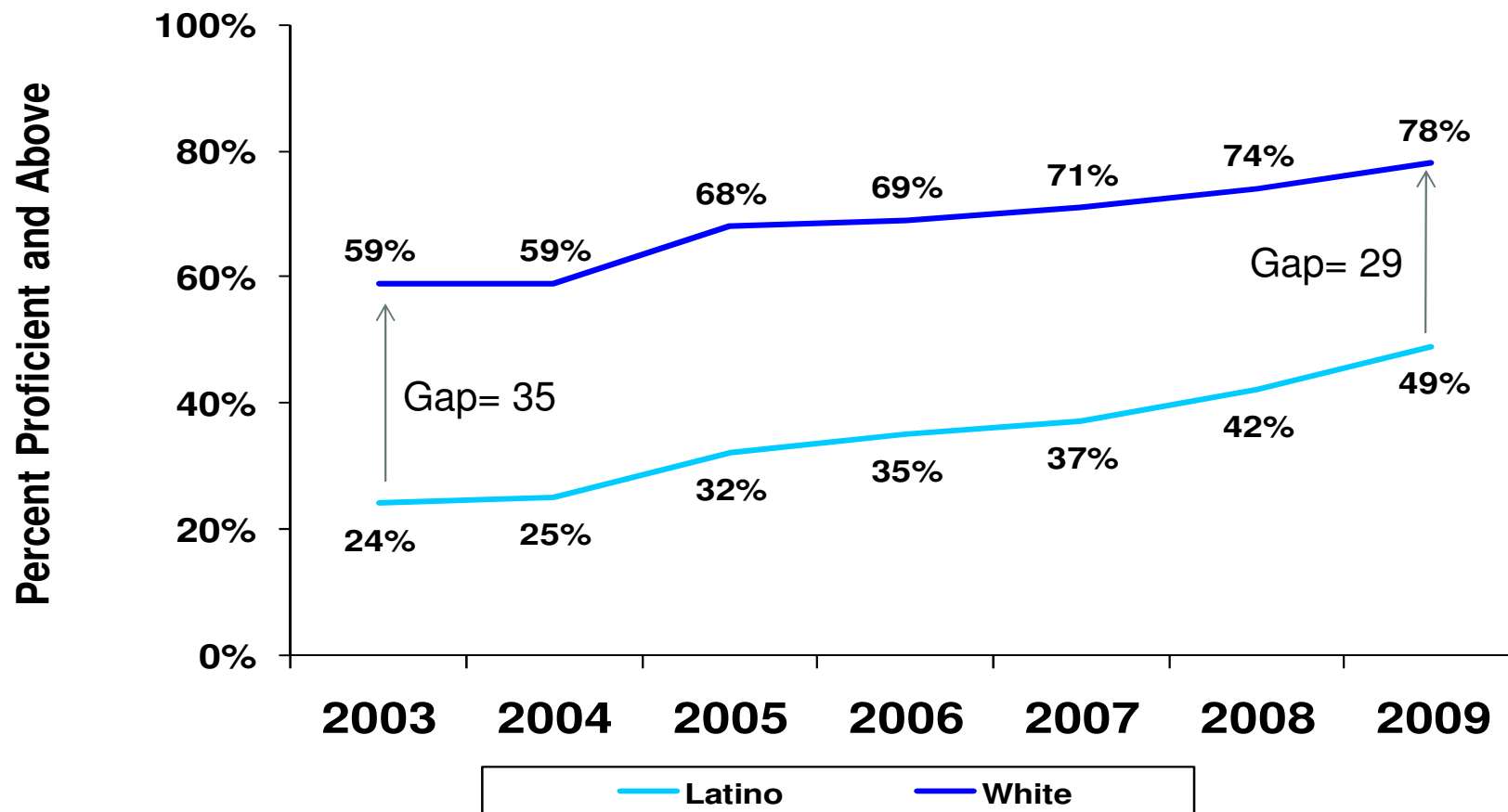
African-American Achievement Gap

CST 4th Grade English-Language Arts, 2003-2009



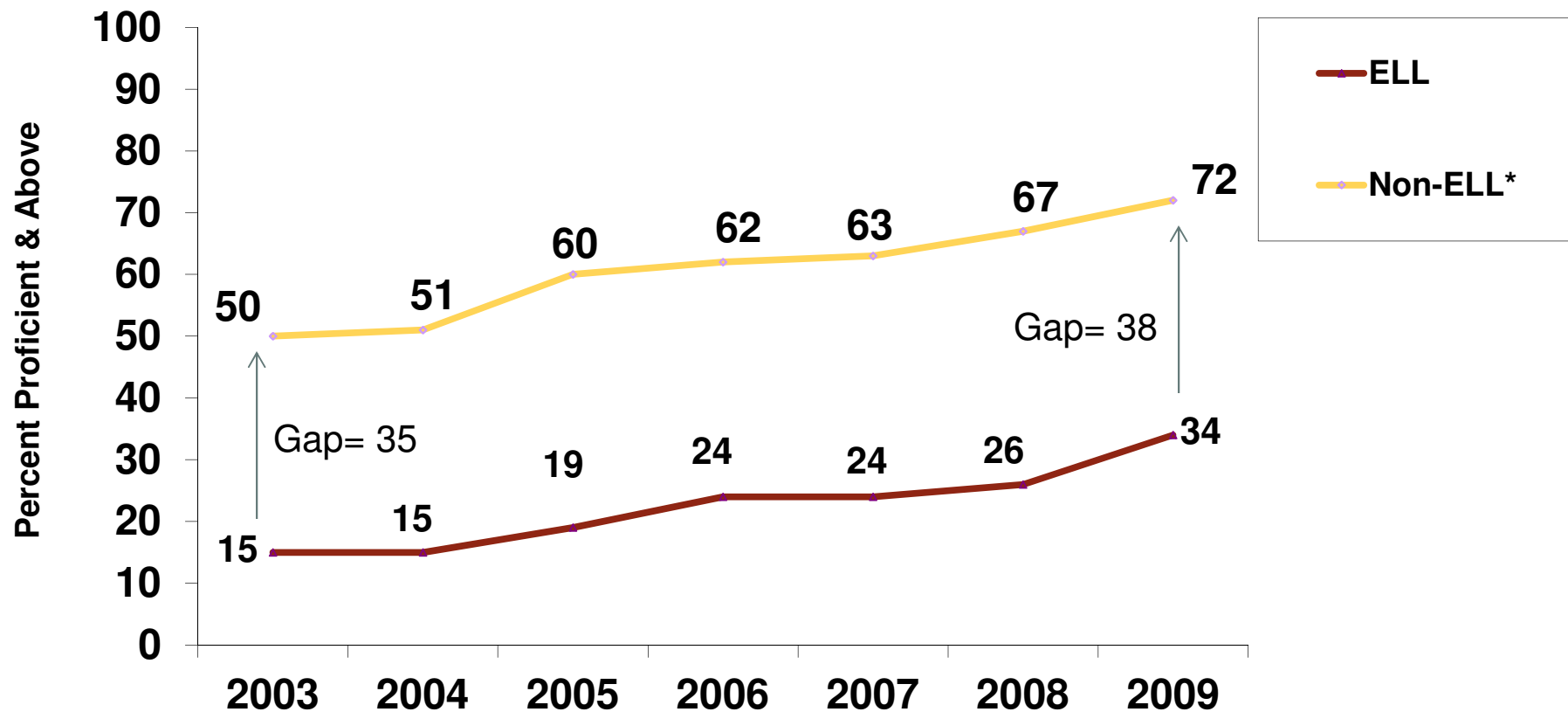
Latino Achievement Gap

CST 4th Grade English-Language Arts, 2003-2009



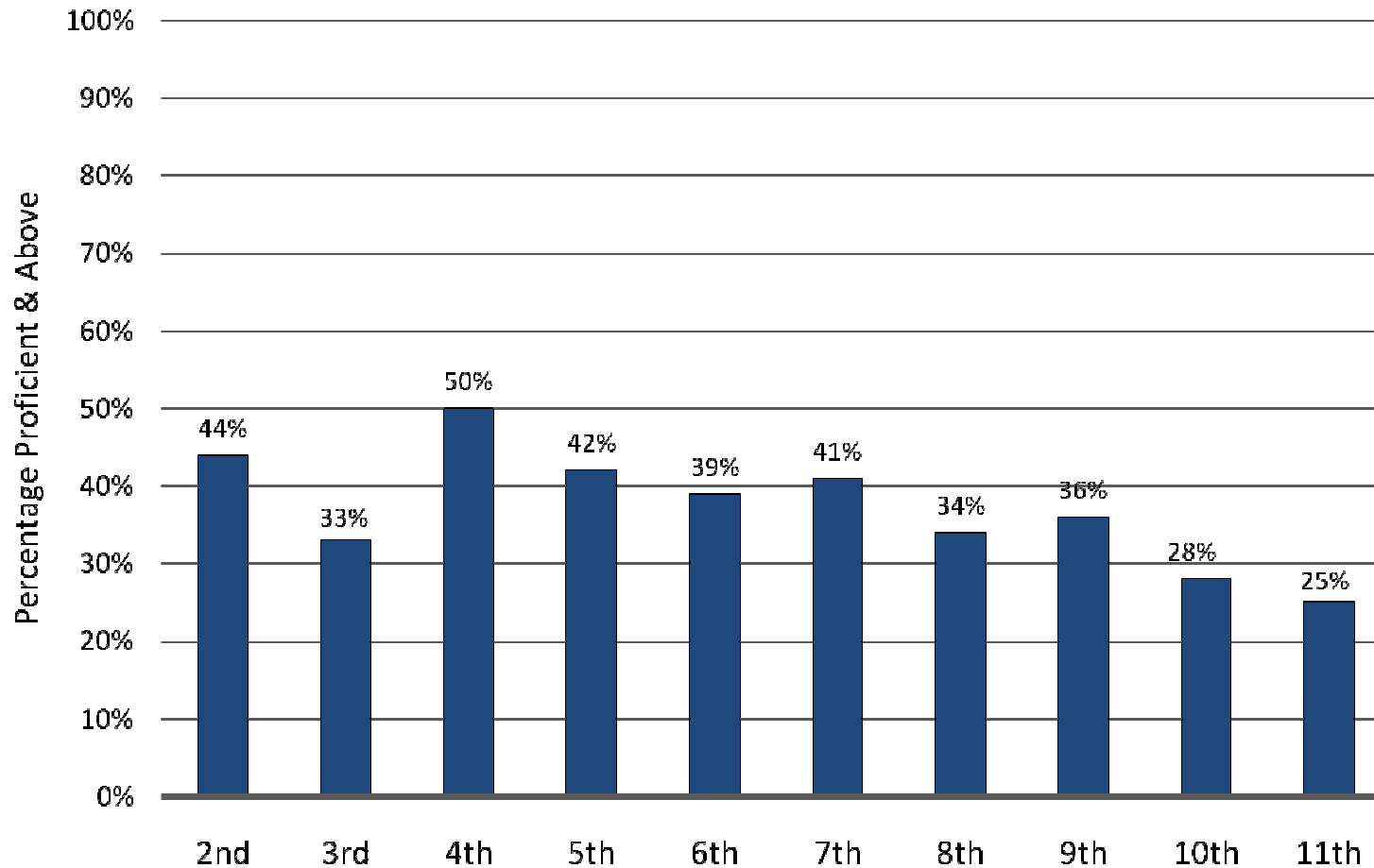
ELL Achievement Gap

CST 4th Grade English-Language Arts, 2003-2009



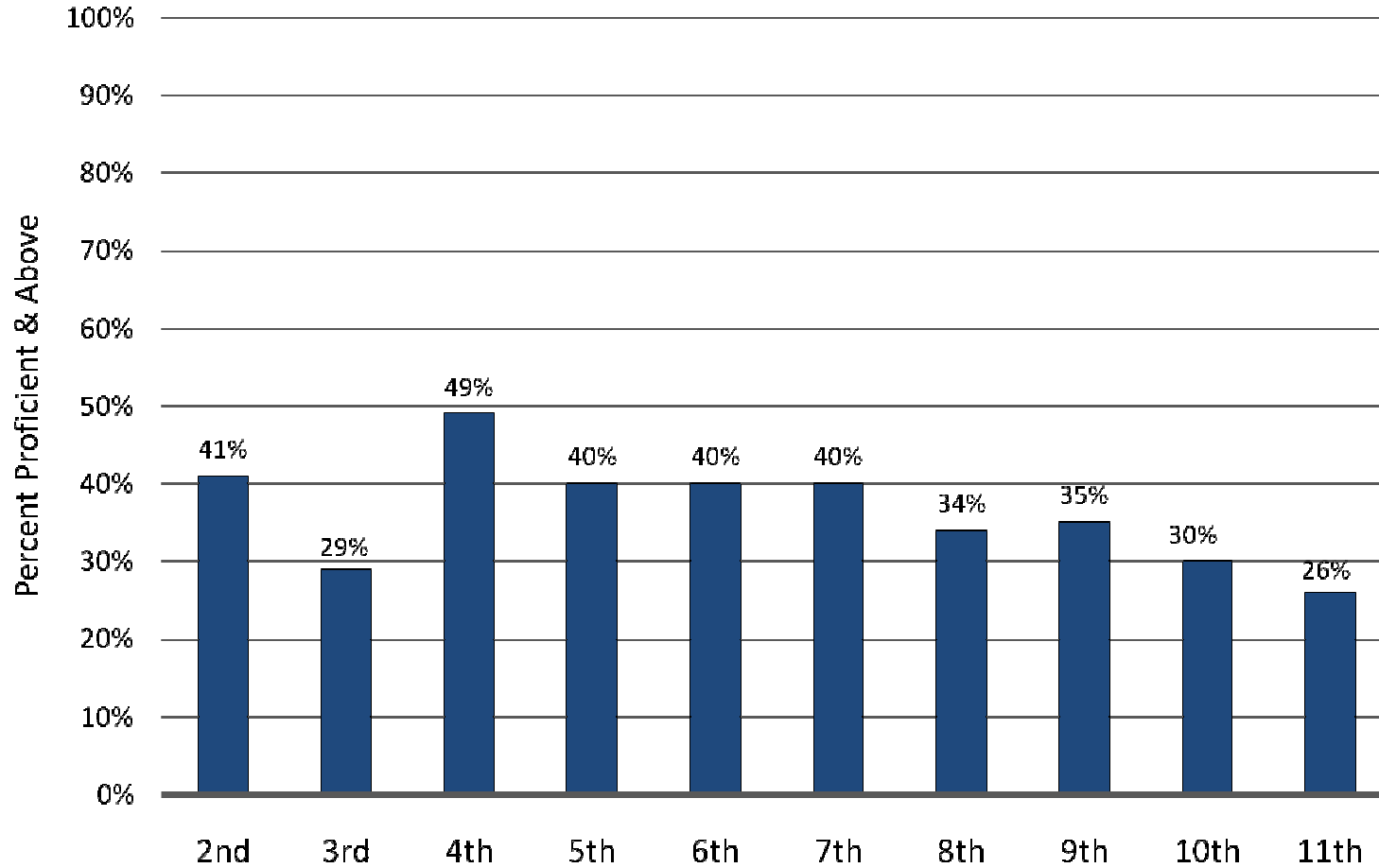
Note: Non-ELLs include Fluent-English Proficient and English Only students

African-American ELA Proficiency, by grade, 2009



Source: California Department of Education, 2009

Latino ELA Proficiency, by grade, 2009



Source: California Department of Education, 2009

Achievement Gaps Through the Grades

African-American and White Students, 2009

	Grade	African-American Students Scoring Proficient + Advanced	White Students Scoring Proficient + Advanced	Gap Between AA and White Students (Percentage Points)
English Language Arts	2	44%	68%	24
	4	50%	78%	28
	8	34%	66%	32
	11	25%	55%	30
Math	2	49%	77%	28
	4	51%	78%	27
	Algebra I EOC	16%	39%	23
	Algebra II EOC	12%	33%	21

Note: Districts were only included in the analysis if they were "Unified" districts, where 2008-09 enrollment was ≥ 5 percent African American.

Achievement Gaps Through the Grades

Latino and White Students, 2009

	Grade	Latino Students Scoring Proficient + Advanced	White Students Scoring Proficient + Advanced	Gap Between Latino and White Students (Percentage Points)
English Language Arts	2	41%	68%	27
	4	49%	78%	29
	8	34%	66%	32
	11	26%	55%	29
Math	2	53%	77%	24
	4	56%	78%	22
	Algebra I EOC	20%	39%	19
	Algebra II EOC	26%	33%	7

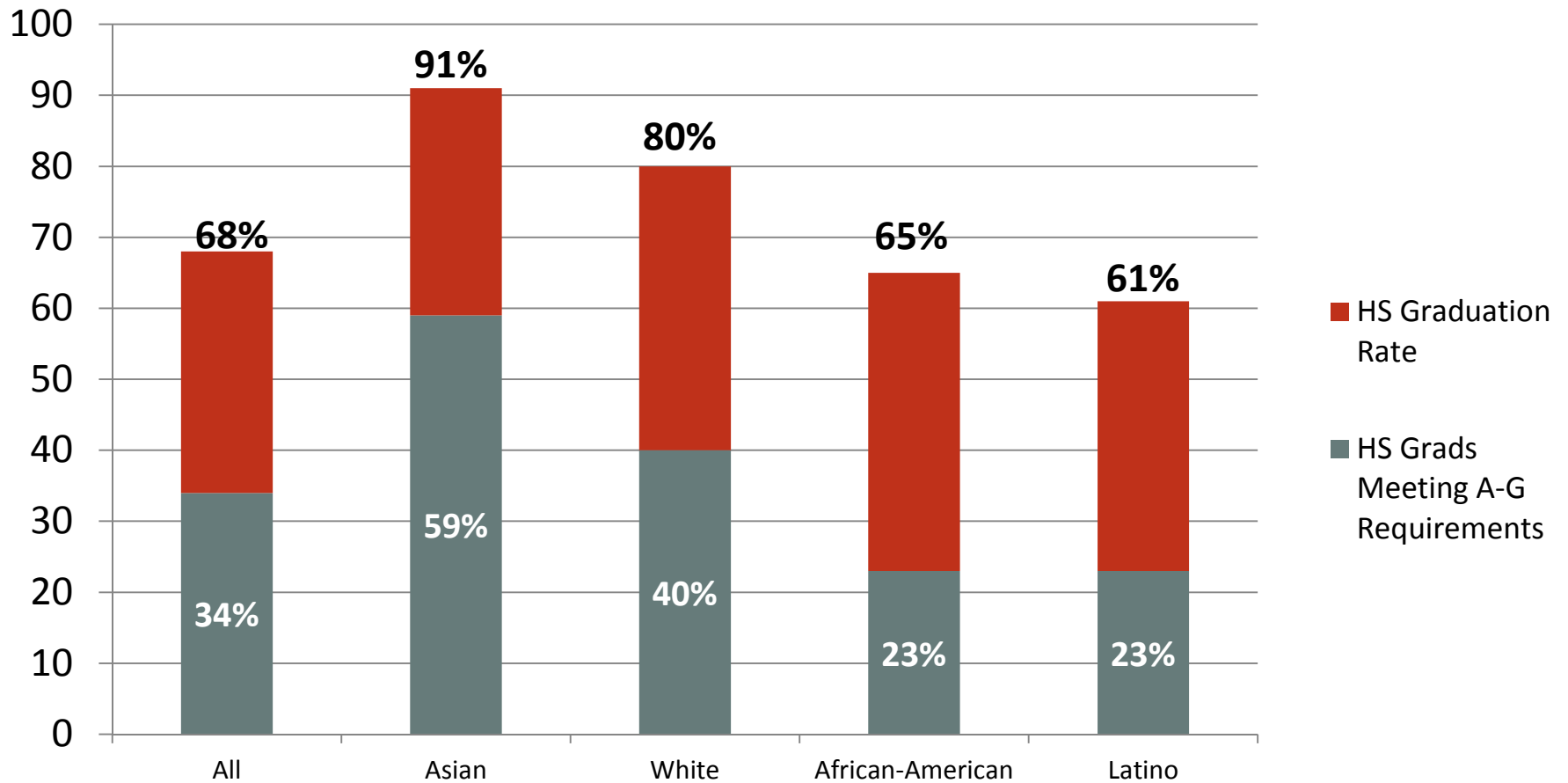
Note: Districts were only included in the analysis if they were "Unified" districts, where 2008-09 enrollment was ≥ 5 percent Latino.



COLLEGE READINESS:

What do we know about how well
California's high school students are
prepared for higher education?

High School Graduates and A-G Graduation Rates, by Race/Ethnicity, 2007-08

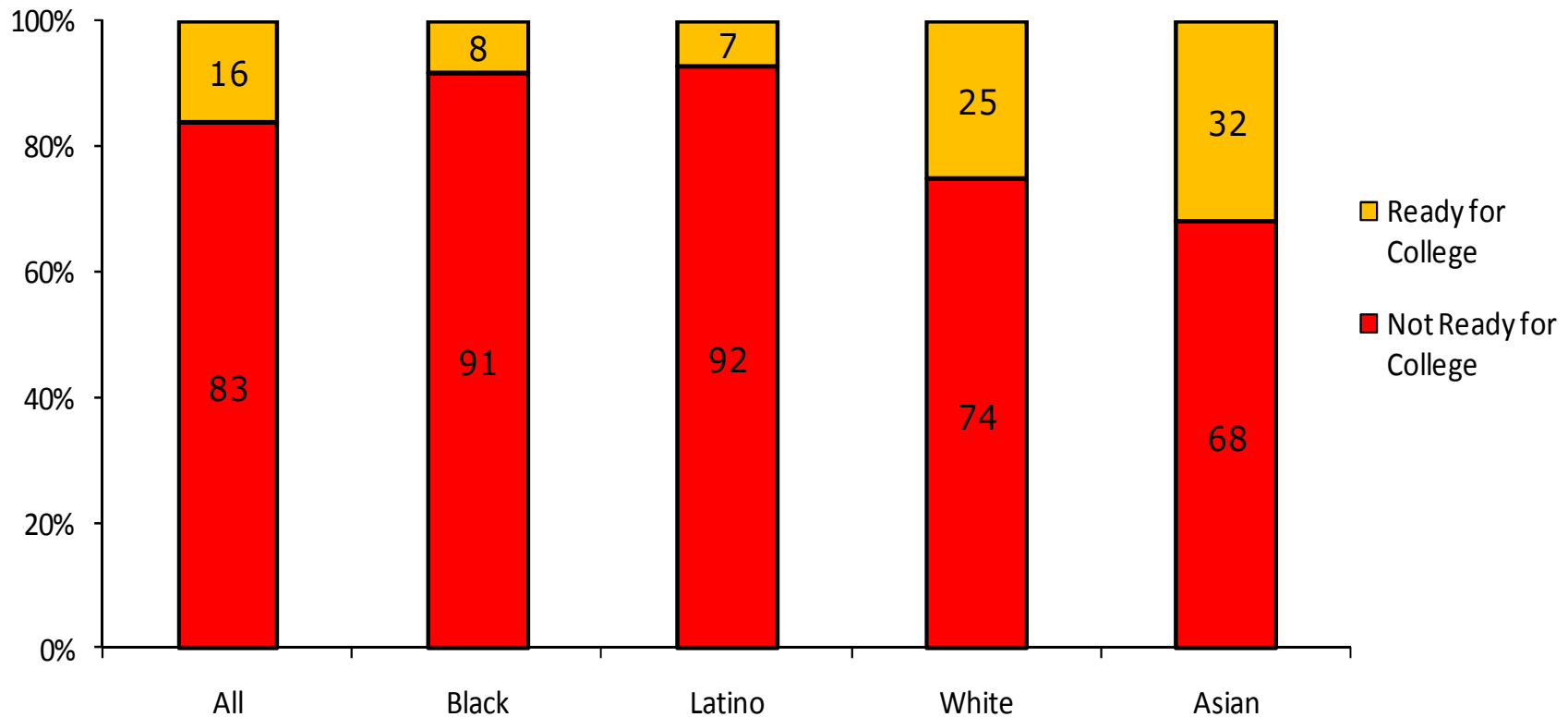


Source: California Department of Education, 2009; Graduation rates calculated using Averaged Freshman Graduation Rate (AFGR; Raising the Roof data tool)

Early Assessment Program (EAP)

- Implemented in 2004 by the CSU, in partnership with the state Board of Education and CDE
- Goal: to provide HS seniors with an early indication of whether or not they are ready for college level courses
- EAP is much more rigorous than the CAHSEE (6th, 7th and 10th grade standards)
- Augmentation of CST 11th Grade ELA & Algebra II & Summative Math with 15 additional multiple choice questions and an essay

California Early Assessment Program (EAP) English Results by Ethnicity, 2009



Source: California State University, Early Assessment Program data, 2009



COLLEGE ACCESS AND SUCCESS

African-American and Latino
Access and Success Rates in
Higher Education

Eye of the Needle: African American Students

- In 2008, **17%** of African-American public high school graduates in CA enrolled in a UC or CSU as first-time freshmen.
- African-American students represent a scant **3%** of UC undergraduate enrollment and **6%** of CSU undergraduate enrollment, despite the fact that African Americans represent **8%** of the California population between the ages of 18 and 24.
- College admission is no guarantee of success. Six-year graduation rates for African-American first-time freshman are low, ranging from **29-33%** percent in the CSU system and **70-73%** in the UC system (depending on the source).

Eye of the Needle: Latino Students

- In 2008, **14%** of Latino public high school graduates in CA enrolled in a UC or CSU as first-time freshmen.
- Latino students represent only **16%** of UC undergraduate enrollment and **25%** of CSU undergraduate enrollment, despite the fact that Latinos represent **45%** percent of the California population between the ages of 18 and 24.
- College admission is no guarantee of success. Six-year graduation rates for Latino first-time freshman range from **41%** in the CSU system to in the **72%** in the UC system

Not Rocket Science

- Learn from success and hold districts accountable for failure.
- Quality Teachers: Identify and assign the most effective teachers to the highest need students and remove ineffective teachers.
- School Stability: Protect high-poverty, high-need schools with large percentages of African-American students from staffing and instructional instability.
- Academic Rigor: Guarantee access to college and career-ready coursework and provide students with the additional supports necessary for success.
- Target resources based on need.

Top and Bottom Performers: Overall CST Proficiency Rates for African-American 4th Graders, 2009

		District	% of AA Students Scoring Proficient + Advanced
English Language Arts	Top-Performing Districts	Vista Unified (San Diego County)	72%
		Corona-Norco Unified (Riverside County)	70%
		Riverside Unified (Riverside County)	60%
	Lowest Performing Districts	Fresno Unified (Fresno County)	39%
		Lodi Unified (San Joaquin County)	38%
		Stockton Unified (San Joaquin County)	35%
Math	Top-Performing Districts	Corona-Norco Unified (Riverside County)	70%
		Vista Unified (San Diego County)	65%
		Riverside Unified (Riverside County)	63%
	Lowest Performing Districts	Hayward Unified (Alameda County)	36%
		San Francisco Unified (San Francisco County)	36%
		Stockton Unified (San Joaquin County)	36%

Note: Districts were only included in the analysis if they were top 50 enrolled "Unified" districts, where 2008-09 enrollment was ≥ 5 percent African American.

Top and Bottom Performers: Overall CST Proficiency Rates for Latino 4th Graders, 2009

		District	% of Latino Students Scoring Proficient + Advanced
English Language Arts	Top-Performing Districts	Temecula Valley Unified (Riverside County)	80%
		Irvine Unified (Orange County)	78%
		Torrance Unified (Los Angeles County)	72%
	Lowest Performing Districts	Hayward Unified (Alameda County)	36%
		Stockton Unified (San Joaquin County)	37%
		San Bernardino Unified (San Bernardino County)	38%
Math	Top-Performing Districts	Temecula Valley Unified (Riverside)	82%
		Clovis Unified (Fresno County)	73%
		Torrance Unified (Los Angeles County)	72%
	Lowest Performing Districts	Hayward Unified (Alameda County)	39%
		San Francisco Unified (San Francisco County)	42%
		Moreno Valley Unified (Riverside County)	49%

Note: Districts only included analysis if they were top 50 enrolled "Unified" districts, where 2008-09 enrollment was ≥ 5 percent Latino.

Top and Bottom Performers: *Gains* in African-American 4th Grade CST Performance, 2003-09

		District	Change in Proficiency Rate Among AA Students (% Point Increase)
English Language Arts	Top-Gaining Districts	Vista Unified (San Diego County)	+36
		Compton Unified (Los Angeles County)	+31
		Riverside Unified (Riverside County)	+30
	Lowest Gaining Districts	San Juan Unified (Sacramento County)	+13
		Elk Grove Unified (Sacramento County)	+13
		Hemet Unified (Riverside County)	+11
Math	Top-Gaining Districts	Palm Springs Unified (Riverside County)	+34
		Compton Unified (Los Angeles County)	+32
		San Diego Unified (San Diego County)	+31
	Lowest Gaining Districts	Hesperia Unified (San Bernardino County)	+9
		Hayward Unified (Alameda County)	+9
		Elk Grove Unified (Sacramento County)	+3

Note: Districts were only included in the analysis if they were top 50 enrolled "Unified" districts, where 2008-09 enrollment was ≥ 5 percent African American.

Top and Bottom Performers: *Gains* in Latino 4th Grade CST Performance, 2003-09

		District	Change in Proficiency Rate Among Latino Students (% Point Increase)
English Language Arts	Top-Gaining Districts	Desert Sands Unified (Riverside County)	+37
		Hacienda La Puente (Los Angeles County)	+33
		Glendale Unified (Los Angeles County)	+32
	Lowest Gaining Districts	Poway Unified (San Diego County)	+13
		Hayward Unified (Alameda County)	+13
		Saddleback Valley Unified (Orange County)	+16
Math	Top-Gaining Districts	Santa Ana Unified (Orange County)	+35
		Oakland Unified (Alameda County)	+33
		Palm Springs Unified (Riverside County)	+33
	Lowest Gaining Districts	Poway Unified (San Diego County)	+13
		Fremont Unified (Alameda County)	+10
		Hayward Unified (Alameda County)	+10

Note: Districts only included analysis if they were top 50 enrolled "Unified" districts, where 2008-09 enrollment was ≥ 5 percent Latino.

Not Rocket Science

- Learn from success and hold districts accountable for failure.
- Quality Teachers: Identify and assign the most effective teachers to the highest need students and remove ineffective teachers.
- School Stability: Protect high-poverty, high-need schools with large percentages of African-American students from staffing and instructional instability.
- Academic Rigor: Guarantee access to college and career-ready coursework and provide students with the additional supports necessary for success.
- Target resources based on need.

Not Rocket Science

- Learn from success and hold districts accountable for failure.
- Quality Teachers: Identify and assign the most effective teachers to the highest need students and remove ineffective teachers.
- School Stability: Protect high-poverty, high-need schools with large percentages of African-American students from staffing and instructional instability.
- Academic Rigor: Guarantee access to college and career-ready coursework and provide students with the additional supports necessary for success.
- Target resources based on need.

Not Rocket Science

- Learn from success and hold districts accountable for failure.
- Quality Teachers: Identify and assign the most effective teachers to the highest need students and remove ineffective teachers.
- School Stability: Protect high-poverty, high-need schools with large percentages of African-American students from staffing and instructional instability.
- Academic Rigor: Guarantee access to college and career-ready coursework and provide students with the additional supports necessary for success.
- Target resources based on need.

Highest and Lowest African-American A-G Graduation Rates, by District, 2009

	District	A-G Graduation Rate
Top Districts	Corona-Norco Unified (Riverside County)	43%
	Pomona Unified (Los Angeles County)	35%
	Fresno Unified (Fresno County)	35%
Bottom Districts	Stockton Unified (San Joaquin County)	9%
	Fontana Unified (San Bernardino County)	8%
	Vista Unified (San Diego County)	8%

Silicon Valley Districts

Palo Alto Unified: 46%*

Santa Clara Unified: 29%

East Side Union: 26%

* n<25

Highest and Lowest Latino A-G Graduation Rates, by District, 2009

	District	A-G Graduation Rate
Top Districts	Poway Unified (San Diego County)	46%
	Oakland Unified (Alameda County)	42%
	San Ramon Valley Unified (Contra Costa County)	38%
Bottom Districts	Stockton Unified (San Joaquin County)	9%
	Fontana Unified (San Bernardino County)	9%
	Hesperia Unified (San Diego County)	10%

Silicon Valley Districts
Palo Alto Unified: 36%
Santa Clara Unified: 24%
East Side Union: 20%

Note: Districts were only included in the analysis if they were "Unified" districts, where 2008-09 enrollment was ≥ 5 percent Latino.

Not Rocket Science

- Learn from success and hold districts accountable for failure.
- Quality Teachers: Identify and assign the most effective teachers to the highest need students and remove ineffective teachers.
- School Stability: Protect high-poverty, high-need schools with large percentages of African-American students from staffing and instructional instability.
- Academic Rigor: Guarantee access to college and career-ready coursework and provide students with the additional supports necessary for success.
- Target resources based on need.